



Model 4808NGA Applicator

Owner/Operator's Manual

Owner/Operator's Manual

Revision Date: May 4, 2022

Prepared By:

KS
2345 U Road
Sabetha, KS 66534
Office Telephone: 785-284-0600

Table of Contents

<u>1</u> – INTRODUCTION	1
SAFETY 1ST.....	1
GENERAL INFORMATION	2
<u>2</u> – LIMITED WARRANTY.....	3
<u>3</u> – SAFETY INFORMATION.....	5
WHY IS SAFETY IMPORTANT?.....	5
SIGNAL WORDS:.....	5
GENERAL SAFETY STATEMENTS	6
EMERGENCY SHUTDOWN SEQUENCE	7
PINCH POINTS.....	7
SHIELDS AND GUARDS.....	7
BEWARE OF ELECTRICAL HAZARDS	7
PERSONAL PROTECTIVE EQUIPMENT (P.P.E.).....	8
OPERATOR QUALIFICATIONS	8
<u>4</u> – INSTALLING SAFETY SIGNS	10
<u>5</u> – OPERATION	13
OPERATION RECOMMENDATIONS	13
EMERGENCY SHUTDOWN.....	13
DISASSEMBLY AND REASSEMBLY	13
AIR PURGE.....	13
LIQUID PLUMBING.....	14
KEY COMPONENTS.....	14
<u>6</u> – MAINTENANCE.....	15
COMPONENT MAINTENANCE	15
RECOMMENDED CLEANING PROCEDURE.....	16
<u>7</u> – TROUBLESHOOTING	17
<u>8</u> – PARTS.....	19
HOW TO ORDER PARTS.....	19
<u>9</u> – GENERAL DIMENSIONS.....	23
<u>10</u> – SPECIFICATIONS.....	24
<u>11</u> – BOLT TORQUE SPECIFICATIONS.....	25

1 - Introduction

Document Scope and purpose, and general responsibilities.

Thank you for purchasing your new 4808NGA Applicator from KSi Conveyors. We are pleased to have you as a customer, and hope you will enjoy many years of productive service from our products and staff.

Please read and understand this manual before operating the equipment. Pay special attention to the safety information to protect yourself from harm. If you need information beyond what can be found in the manual, please give our friendly staff a call at 888 KSI-CONV.

Safety 1st

Replace missing guards and shields FREE OF CHARGE!

KSi Applicators are built to provide many years of dependable service to our customers through durable craftsmanship.

One of the most important aspects of KSi engineering is its SAFETY 1st design throughout all product lines. At KSi, safety is NO ACCIDENT!

That is why KSi has implemented its SAFETY 1st program. Should you ever need guards, shields, safety decals or owner/operator manuals, simply contact KSi and we will supply you with them FREE OF CHARGE!

If you need any of the above listed safety items or have safety questions, please contact KSi:

454 N State Route 49
Cissna Park IL 60924
Ph: 815-457-2403
888-574-2668

General Information

- A. KSi reserves the right to improve its product whenever possible and practical to do so. We reserve the right to change, improve, and modify products at any time without obligation to make changes, improvements, and modifications on equipment previously sold.
- B. When receiving merchandise, it is important to check the quantity of parts and their descriptions with the packing list enclosed with each package. All claims for freight damage or shortage must be made with the consignee within ten (10) days from the date of the occurrence of freight damage. The consignee should accept the shipment after noting the damage or loss.
- C. KSi does not make any guarantees on self-cleanout or the cross contamination of seed of any kind for their applicators. Manual cleanout will be required.

2 – Limited Warranty

KSi Conveyors 2 Year Limited Warranty

What Does This Warranty Cover?

KSi will warranty our equipment to be free from defects in material and workmanship under normal usage and conditions.

What Does This Warranty Not Cover?

The warranty does not cover equipment that has been damaged by:

- Normal wear and tear;
- Misuse, abuse, or accident;
- Failure to follow the operating instructions or maintenance protocols that we provided;
- Any improper or unauthorized repairs or modifications to the equipment; or
- Fire, flood, "acts of God," or other contingencies beyond our control.

How Long Does the Coverage Last?

The warranty period for new equipment lasts for 24 months after the delivery date.

What Will We Do to Correct Problems?

KSi will repair or replace the equipment covered by this warranty at no charge. Service trip and travel expenses will incur additional charges.

How Do You Get Service?

- If something goes wrong with your equipment, call your Dealer or KSi Conveyors Parts & Services. Your dealer or KSi will ask for the equipment's serial number and a description of the problem. KSi will determine whether the equipment is covered under warranty.
- If the problem can be resolved by providing a replacement part, your dealer or KSi will ship or deliver the part. Expedited services will incur additional charges. You may be required to return the defective equipment.
- If the problem requires a service call, your dealer or KSi will schedule a service visit at a mutually convenient time. Expedited services will incur additional charges.

- You will be invoiced for any service or parts provided if we determine that the equipment is not covered under this warranty or the problem was due to one of the disqualifying causes in the section entitled “What Does This Warranty Not Cover” on page 3.

What Will KSi Not Do?

KSi will not be liable for any amount that exceeds the amount you paid for the Equipment. However arising, we will not be liable for:

- Expenses incurred without our written authorization;
- Direct, indirect, incidental or consequential damages, such as the loss of anticipated profits or benefits;
- Loss or cross contamination of any seed, treatment fluid, or other materials used with the equipment; or
- Modifications or erection defects that create structural or storage quality problems.

We make no warranty of merchantability or fitness for a particular purpose.

How Does State Law Relate to This Warranty?

This warranty gives you specific legal rights, and you may also have other rights, which vary from state to state.

Who is Covered?

Only the original end user of the product is covered by this Warranty.

3 – Safety Information

Tips for safe operation of KSi Applicators



This Safety Alert symbol means
ATTENTION BECOME ALERT! YOUR SAFETY IS INVOLVED

The Safety Alert symbol identifies important safety messages on KSi Applicators and in the manual. When you see this symbol, be alert to the possibility of personal injury or death. Follow the instructions in the safety message.

Why is SAFETY important?

The Three Best Reasons

- Accidents Disable and Kill
- Accidents Cost \$\$
- Accidents Can be Avoided

Signal Words:

Note the use of signal words Danger, Warning and Caution with the safety messages. The appropriate signal word for each message has been selected using the following guidelines:

DANGER – Indicates an imminently hazardous situation that, if not avoided, will result in death or serious injury. This signal word is to be limited to the most extreme situations, typically for machine components that, for functional purposes, cannot be guarded.

WARNING – Indicates a potentially hazardous situation that, if not avoided, could result in death or serious injury, and includes hazards that are exposed when guards are removed. It may also be used to alert against unsafe practices.

CAUTION – Indicates a potentially hazardous situation that, if not avoided, may result in minor or moderate injury. It may also be used to alert against unsafe practices.

General Safety Statements

1. KSi's principal concern is your safety and the safety of others associated with seed handling equipment. We want to keep you as a customer. This manual is to help you understand safe operating procedures and some problems which may be encountered by the operator and other personnel.
2. As the owner and/or operator, it is your responsibility to know what requirements, hazards, and precautions exist, and to inform all personnel associated with the equipment or that are in the area. Safety precautions may be required from the personnel. Avoid any alteration to the equipment. Such alterations may produce a very dangerous situation, where serious injury or death may occur.
3. This equipment shall be installed in accordance with the current installation codes and applicable regulations which should be carefully followed in all cases. Authorities having jurisdiction should be consulted before installations are made.
4. Untrained operators subject themselves and others to the possibility of serious injury or death. NEVER ALLOW untrained personnel to operate this equipment.
5. Keep children and other unqualified personnel out of the working area at all times.
6. NEVER start equipment until ALL persons are clear of the work area.
7. Be sure ALL operators are adequately rested and prepared to perform all functions of operating this equipment.
8. Keep hair, loose clothing, and shoestrings away from rotating and moving parts. Never wear loose-fitting clothing when working around equipment.
9. NEVER allow any person intoxicated or under the influence of drugs or alcohol to operate the equipment.
10. Make sure someone is nearby who is aware of the proper shutdown sequence in the event of an accident or emergency.
11. NEVER work alone.
12. ALWAYS think before acting. NEVER act impulsively around the equipment.
13. Make sure ALL equipment is locked in position before operating.
14. Keep hands and feet away from the applicator intake and other moving parts.

15. NEVER attempt to assist machinery operation or to remove trash from the equipment while in operation.
16. NEVER drive, stand, or walk under the equipment.
17. Use ample overhead lighting during periods of low light, such as after sunset, to light the work area.
18. Keep the area around intake free of obstacles such as electrical cords, blocks, etc. that might trip workers.

Emergency Shutdown Sequence

See Emergency Shutdown on page 13 under the Operation section.

Pinch Points



A pinch point is any place on the equipment which can injure the operator.

1. Components of this equipment have sharp edges which can scrape and/or cut an operator.
2. A moving applicator can sever an operator's limb or even kill.

Shields and Guards

1. Always keep all shields and guards in place during operation.
2. Missing shields for guards can be replaced for free by contacting KSi.

Beware of Electrical Hazards



Electricity can kill! Use extreme caution around electrical components.

Have your electric company check the transformer and lead wires to be sure they are large enough to handle the additional load of the motor.

Electrical wiring should be done by a qualified electrician and all components shall comply with applicable provisions of National Fire Protection Association Standard NFPA No. 70, American National Standard Inst. ANSI-C1 or with the requirements of the authority having local jurisdiction. KSi assumes no responsibility for the electrical wiring used with this machine.

KSi will not be liable for failure of the equipment due to poor or improper electrical power installation.

Wires which are too small deliver insufficient voltage causing the motor to overload or burn out.

Improper or inadequate wiring can kill or cause fires.

All electrical devices used on this machine shall be arranged to operate in a “fail safe” manner, that is, if power failure or failure of device occurs, a hazardous condition must not result. This means the machine must not restart by itself after a power failure etc. when power returns.

A means to lock out power must be provided at time of installation to prevent inadvertent starting of the equipment.

Personal Protective Equipment (P.P.E.)

1. The proper personal protective equipment should be worn at all time.

2. Always wear safety glasses when in the work area.



3. Proper footwear should be worn during the installation process, as well as any maintenance functions.

4. It is recommended to wear protective gloves during the installation process, as well as any maintenance functions. It is recommended to wear them also when removing any covers.



5. The operator should never wear jewelry.

6. Loose-fitting clothes should not be worn around moving parts on conveyors or equipment. Any clothing that becomes loosened should be tucked in tightly.



7. Loose or dangling shoe strings should be tucked in.

8. Long hair should be tied up and/or back.

Operator Qualifications

1. The User/Operator must be competent and experienced to operate the equipment. Anyone who works around applicators must have good common sense in order to be qualified. These persons must also know and meet all other qualifications, such as:

- A. Any person who has not read and/or does not understand all operation and safety procedures is not qualified to operate any applicator system.
- B. Certain regulations apply to personnel operating power machinery. Personnel under the age of 18 years may not operate power machinery, including applicators. It is your responsibility, as owner and/or supervisor, to know what these regulations are in your area or situation.
- C. Unqualified or incompetent persons are to remain out of the work area.

D. O.S.H.A. (Occupational Safety & Health Administration) regulations state:

“At the time of initial assignment, and at least annually thereafter, the employer shall instruct every employee in the safe operation and servicing of all equipment with which the employee is, or will be, involved.” (Federal Occupational Safety & Health Standards for Agriculture. Subpart D, Section 19287.57 (a) (6).

2. As a requirement of OSHA, it is necessary for the employer to train the employee in the safe operating and safety procedures for this applicator. We have included this sign-off sheet for your convenience and personal record keeping. All unqualified persons are to stay out of the work area at all times. It is recommended that another qualified person who knows the shutdown procedure is in the area at all times in the event of an emergency. A person who has not read this manual or doesn't understand all operating and safety instructions is not qualified to operate this machine.

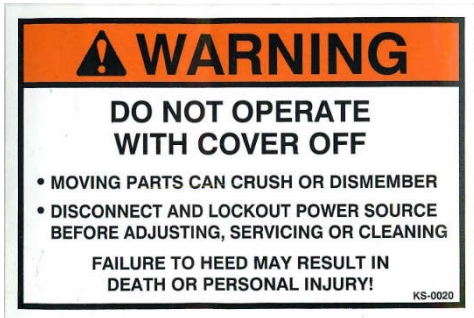
Date	Employee's Name (printed)	Employee's Signature
	1.	
	2.	
	3.	
	4.	
	5.	
	6.	
	7.	
	8.	
	9.	
	10.	
	11.	
	12.	
	13.	
	14.	
	15.	
	16.	
	17.	

4 – Installing Safety Signs

Location and installation of Safety signage

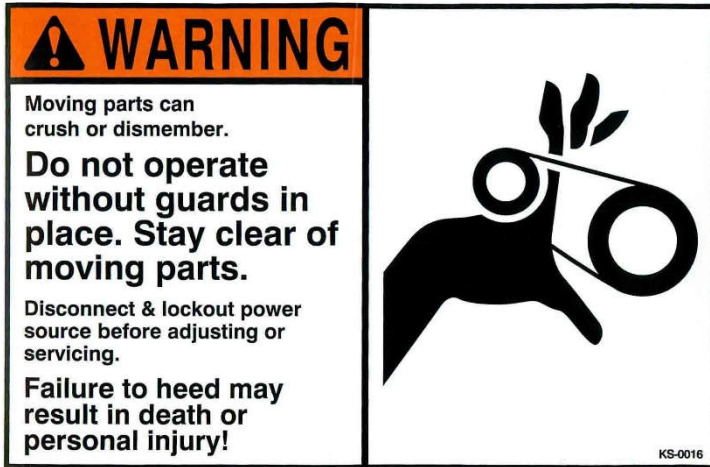
The safety decals listed below are included with the applicator. The following pages show the location of the decals on the applicator. Inspect all decals and replace any that are worn, illegible, or missing. Contact your dealer or the factory to order replacement decals.

KS-0020



KS-0015





5 – Operation

Operation Recommendations

1. Only qualified operators should operate this equipment.
2. Operation of the Drum and Atomizer can only be controlled through AutoTreat automation. See the applicable Automation manual for operating Applicator functions through your automation system, either in hand or as part of a job.

Emergency Shutdown

1. The equipment can be shut down in an emergency situation a few different ways, depending on the severity of the situation.
 - a. Turn equipment off via the AutoTreat controls system.
 - b. Press Emergency Stop on the main KSi electrical panel.
 - c. Turn the disconnect switches that are mounted to the Applicator frame to their off position.

Disassembly and Reassembly

1. If any part of the equipment has been disassembled for any reason such as cleaning, be sure that all components have been reassembled fully and correctly. Do not operate the equipment without all guards in place.
2. If the Atomizer lower housing was disconnected for cleaning, ensure that it is again fully secured with all three clamps before starting or operating the equipment.
3. When reassembling the drum discharge chute assembly after removal, be sure that the discharge flaps are seated properly in relation to the drum's discharge lifting paddles. This will prevent damage to the flaps or discharge chute assembly and prevent seed discharging/cleanout problems.

Air Purge

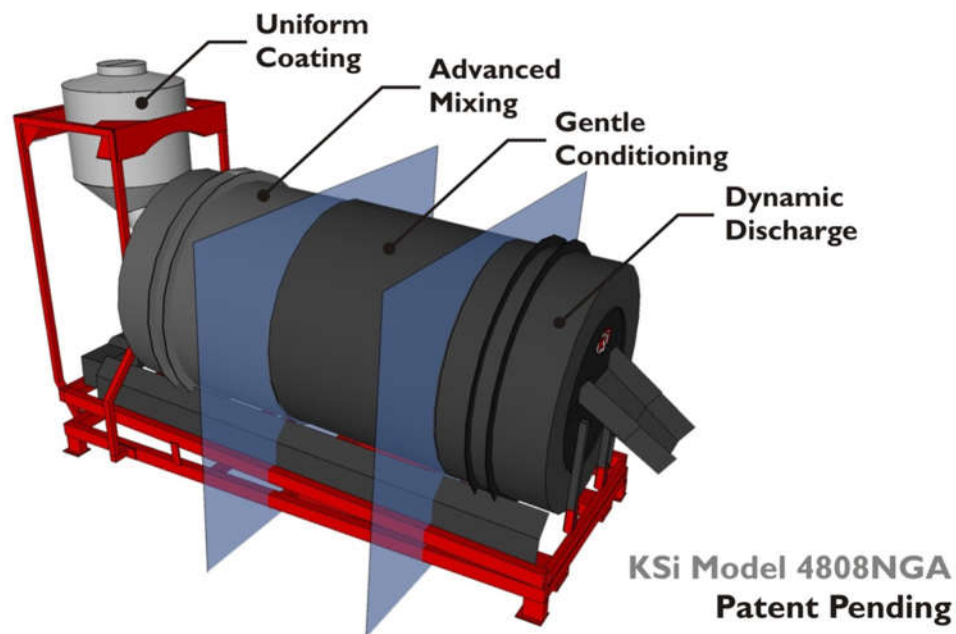
1. The Air Purge is designed to flush out all treatment from the chemical entry into the Atomizer housing after the pumps have stopped pumping liquid, so that minimal treatment that has dripped into the Applicator Drum remains after seed is run through. However, if the Air Purge is set or held too long, you may need to re-prime the lines as the air may have pushed back the treatment in the lines.
2. The Air Purge can be run through the AutoTreat system either in hand or as part of the program. Depending on site constraints and/or conditions, it is also possible that a manual air valve is in place and will be controlled solely by the operator, not by the control system.

Liquid Plumbing

1. For correct and reliable operation, all liquid plumbing components must be kept clean and unobstructed. Flexible lines should not be installed with twists or sharp bends.
2. Be sure to keep the static mixer mounted above the liquid manifold and the check valve assemblies mounted at the liquid manifold inlets clean. Some disassembly of the check valve assemblies may be required to ensure all components inside are in clean working order.

Key Components

1. Seed Flow Distribution Device – manages a wide range of incoming seed flow rates and distributes the flow into a uniform “seed curtain” at the point of chemical application.
2. Applicator Head / Atomizer Disc – atomizes and applies a consistent, even chemical distribution onto the seed curtain which coats the seed more evenly. This allows the Drum to advance the conditioning process forward without any need to compensate for inadequate chemical coverage at the Atomizer.
3. Drum – mixes and conditions the treated seed, using engineered placement of mixing paddles and distribution baffles to control the flow of seed for maximum plant-ability and appearance.
4. Discharge Process – dynamically lifts conditioned, polished seed out of the Drum into the load-out conveyor for quick and complete clean-out from the Drum’s unique, low-profile position.



6 – Maintenance

Component Maintenance

1. Bearings
 - a. Grease 1 – 2 pumps every 50 hours (or once a season)
2. Drive Chain
 - a. Spray with silicone spray every 50 hours (or once a season)
 - b. Remove slack every 50 hours (or once a season)
 - i. Loosen bolts on drive chain guide
 - ii. Remove weight of drum from guide wheels (vehicle jack and board will work for this)
 - iii. Tighten chain as much as possible
 - iv. Retighten drive chain guild bolts evenly.
3. Applicator Gearbox
 - a. The Gearbox is filled with Klubersynth UH1 6-460 at the factory. Klubersynth UH1 6-460 is suitable for USDA Class H1 environments and for a wide range of temperatures (-13° to 320° F). Refer to “Operating Environment” section for the ambient operating temperature for Baldor Speed Reducers.
 - b. This synthetic lubrication does not require periodic changing. The lubrication should only be replaced when maintenance is performed that requires disassembly. Use only Klubersynth UH1 6-460.
 - c. These do not require periodic maintenance. Visual inspection (for oil leakage and general operating condition) and a simple cleaning to remove dirt build-up is recommended. Accumulation of material on the reducer can lead to overheating and reduced life. The gearbox should not be operated in environments with an ambient temperature above 100°.

Recommended Cleaning Procedure

1. Remove all leftover treatment slurry from tanks into appropriate storage containers by operating pumps.
2. Add water and mild detergent to the tanks. Start agitator and allow to run for up to several hours.
3. Turn 3-way calibration valve to calibrate. Start pump to flush the calibration tube and lines. Disassemble and clean calibration tube and squeegee.
4. Disconnect treatment line to the applicator chemical manifold. Place end of line into the tank. Turn 3-way calibration valve to treat, and start pump to flush the lines. If a Micromatic Keg Coupler is used, then place coupler into a container of water and mild detergent to flush the lines into a container.
5. Reconnect treatment lines to applicator head and, if available, install atomizer drip pan, drum discharge cover, and drum discharge drip pan to collect waste.
6. Run drum in forward, run atomizer, and pump cleaning solution through the applicator head and allow it to drain into the drum. Run drum at 10% with liquid in it for up to several hours to wash off any build-up from inside of drum, remove the drum discharge door, and increase the speed to 90% to clean the drum out. A submersible pump may be used to remove waste cleaning solution. Dispose of waste cleaning solution responsibly.
7. If some build-up remains inside of drum, repeat above steps or wash inside of drum with pressure washer and/or brush.
8. Remove transition from atomizer head to drum and remove atomizer disc. With a medium bristle brush, scrub the atomizer disc, inside of the applicator head, and transition.
9. **DO NOT PRESSURE WASH INSIDE THE TREATER HEAD. PRESSURE WASHING THIS AREA WILL RESULT IN THE ATOMIZER MOTOR SEIZING UP AND REQUIRING REPLACEMENT OF THE ATOMIZER MOTOR.**
10. Allow everything to dry and then reassemble. Apply a light coat of mineral oil to the inside of the drum to help reduce rusting.
11. If chemical pumps are stores in an UNHEATED environment during the off-season, RV Antifreeze or windshield wiper fluid should be pumped through the system to avoid freezing.

SIMPLE GREEN AND WATER IS THE RECOMMENDED CLEANING SOLUTION.

DISPOSE OF ALL WASTE ACCORDING TO LOCAL REGULATIONS.

7 – Troubleshooting

Problem	Possible Cause	Solution
<p>Chemical keeps dripping excessively into drum after job is complete.</p>	<p>The tube feeding the liquid distributor plate in the atomizer housing is not pressed in securely.</p>	<p>Remove the atomizer housing and ensure that the tube from the chemical manifold is pressed in the fitting securely on the liquid distributor plate.</p>
	<p>The atomizer motor is not working.</p>	<ul style="list-style-type: none"> • Turn Atomizer motor on in 'Hand' via the AutoTreat system. Consult the AutoTreat manual if needed. • This should make the Atomizer run. It will be very quiet. If you cannot hear it, touch the Atomizer housing to feel for any vibrations. • If you CANNOT feel or hear it run, call KSi Automation Tech Support.
	<p>“Air Purge” is not set up or not working properly in the AutoTreat system.</p>	<ul style="list-style-type: none"> • Operate the Air Purge in 'Hand' via the AutoTreat system. Consult the AutoTreat manual if needed. • Listen for the Air Purge to blow air into the Atomizer housing to clean out the excess chemical. <ul style="list-style-type: none"> ○ If the Air Purge function does not work, call KSi Automation Tech Support. • Check the settings for the Air Purge to make sure the time is accurate for it to run at the end of a job. It should be standard at 1.8 seconds. Consult the AutoTreat manual for verification and/or adjustment of this setting.

<p>I am treating Wheat or Soybeans with a VariRate system and my first seed is not coated well.</p>	<p>It could be that the VariRate “Initial Boost” setting in the AutoTreat system is not accurate for the seed type.</p>	<p>Consult the AutoTreat manual for verification and/or adjustment of this setting.</p>
<p>Seed keeps trickling down into the drum after the job is complete.</p>	<p>The seed basket in the atomizer housing and the plastic cone that protects the atomizer are too close together. Seed keeps trickling because the gap is restricting the flow.</p>	<p>Using 5/16” washers you can shim up the atomizer housing where it bolts together and thereby create more room in-between the cone and the atomizer housing. This will ensure that all the seed being treated gets covered equally and makes it through when treating.</p>
<p>There are still beans in the drum after the job is complete.</p>	<p>The rubber flaps that should be resting on the Dynamic Discharge ring are not. This creates a gap for the beans to fall back into the drum before they are discharged from the drum.</p>	<p>Remove the discharge chute and reinstall chute, making sure that the rubber flaps are resting on the discharge ring inside the drum.</p>
<p>Seed is unevenly treated.</p>	<p>The seed is not flowing evenly over the plastic cone that protects the atomizer motor.</p>	<p>If seed is coming down only one side of the cone, or is not flowing evenly around the cone, contact the KSi Mechanical Service department.</p>
	<p>Liquid plumbing is constricted.</p>	<p>Review plumbing for pinched or kinked lengths and correct constriction.</p>
	<p>Liquid plumbing is partially plugged.</p>	<p>Clean or replace plugged components.</p>
<p>Drum will not turn.</p>	<p>Drum does not run when in a program.</p>	<ul style="list-style-type: none"> • Turn the drum motor on in ‘Hand’ via the AutoTreat system. Consult the AutoTreat manual as needed. • Make sure the Applicator settings in AutoTreat are correct. • Make sure the breaker/disconnect on the Applicator frame is set and not tripped. • If none of the above work, call KSi Automation Tech Support.

8 – Parts

How to Order Parts

1. Refer to the proper layout view for the area of the machine.
2. Find illustration of the part to be ordered.
3. Note the ITEM number in the balloon point to the part.
4. On the parts list, find the ITEM number listed in the table.
5. Find the Quantity, Part Number, and Description associated with the ITEM number for use when placing your order.

Paint

For matching red paint, use Diamond Vogel IB5588, or equivalent paint.

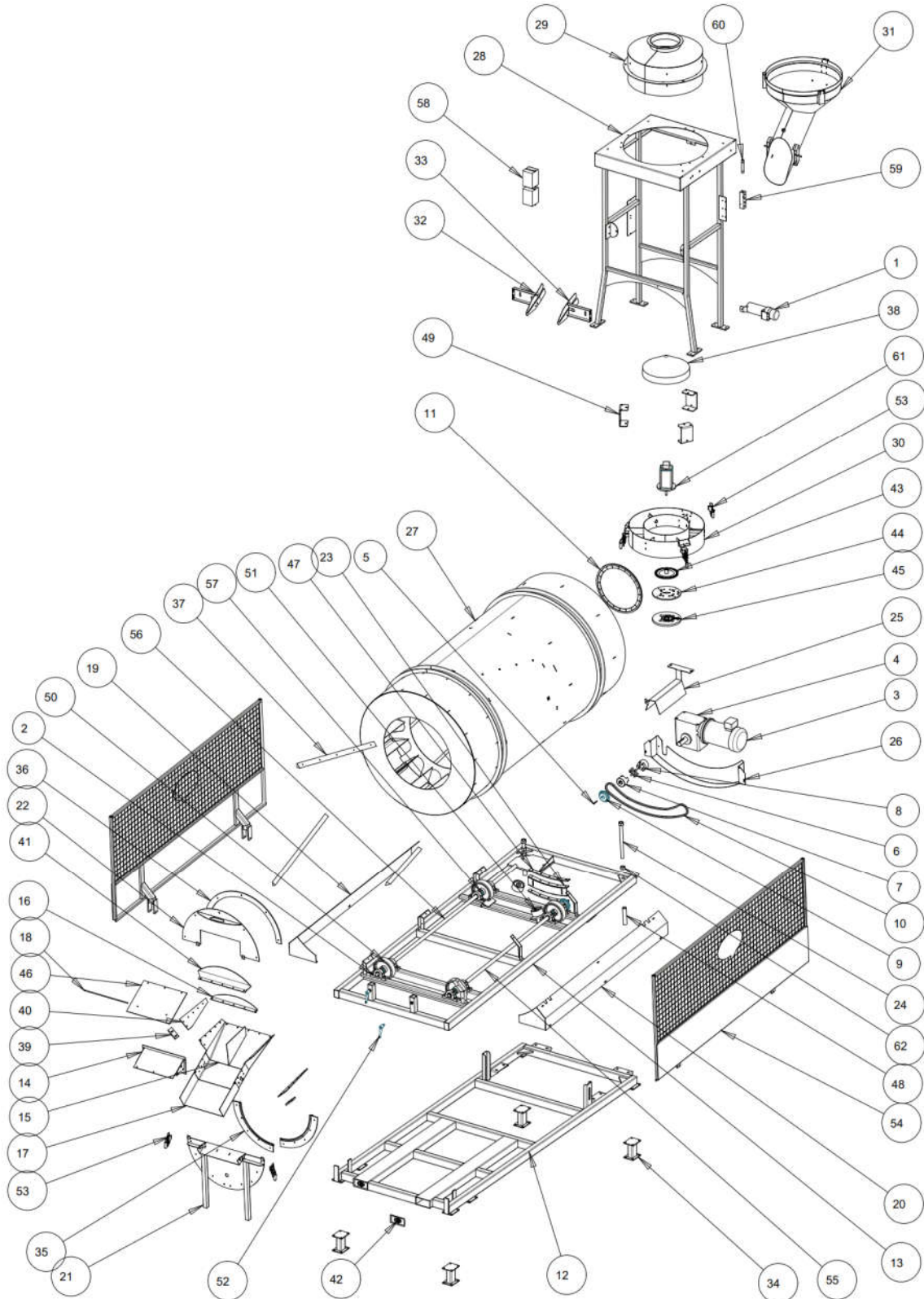
Order supplies from

KSi Conveyors, Inc.
454 N State Route 49
Cissna Park, IL 60924
Phone: 815.457.2403
888.574.2668

Abbreviations used in Parts List

AS—Assembly
BKT—Bracket
ITM—Item
LH—Left hand side
NO— Number
OPT—Optional component
QTY—Quantity
RH—Right hand side
AR—As required (e.g. ft. of belt)

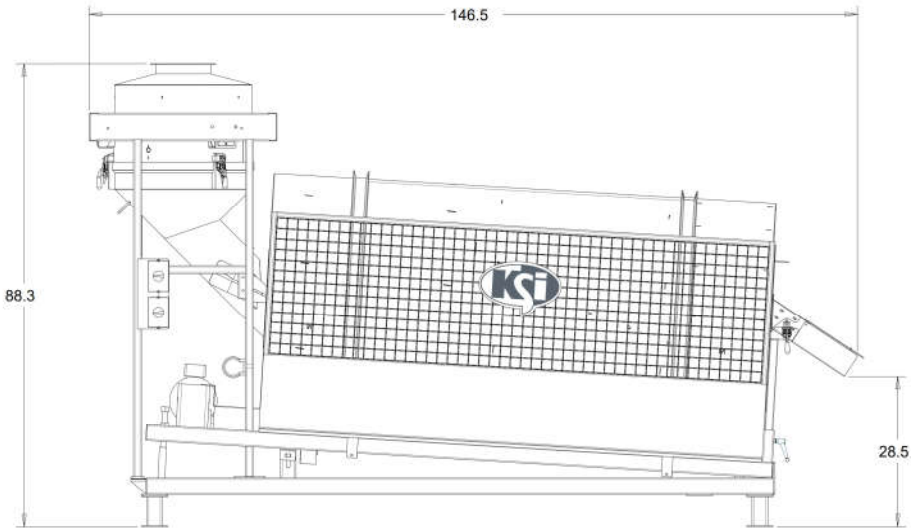
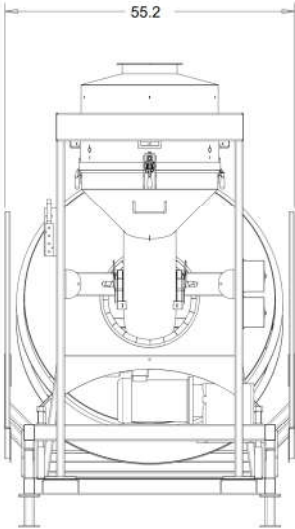
APPLICATOR ASSEMBLY 4808NGA



ITM	QTY	PART NO.	NAME
1	1	24111-03	MANUAL HOLDER
2	8	24112-04	BEARING, MOUNTED - APPLICATOR
3	1	24120-60	MOTOR, 5HP, 3PH, C-FACE - APPLICATOR
4	1	24158-21	SPEED REDUCER, RT. ANGLE, 7.4 INPUT HP, 15:1 RATIO
5	7	24177-01	KEY (1 1/4 SHAFT)
6	1	24342-10	SPIDER-COUPLER, URETHANE (3-21/64 OD)
7	1	24342-11	COUPLER-JAW, 1 1/4" SHAFT
8	1	24342-12	COUPLER-JAW, 1 5/8" SHAFT
9	2	24628-01	CHAIN SPROCKET-50B20 1-1/4" FINISHED BORE KEY WAY&SETSCREWS
10	1	24628-51	CHAIN-ROLLER,#50H-1, 122P TOT
11	1	24631-51	EDGE TRIM FOR 25328-00 INLET, 4.75'
12	1	25301-21	FRAME WDMT-APPLICATOR, LOWER
13	1	25302-00	FRAME, TOP - APPLICATOR
14	1	25307-36	COVER - SER 3 DISCH CHUTE, APPL
15	1	25307-42	DISCHARGE CHUTE-APPL, SS, SERIES3
16	1	25307-81	FLAP SUPPORT - APPL DISCH
17	1	25309-14	CHUTE EXTENSION-APPLICATOR,SS, 12"
18	1	25309-16	SUPPORT ROD-FLAP, APPLICATOR
19	1	25313-00	GUARD, SHAFT - RH
20	1	25314-00	GUARD, SHAFT - LH
21	1	25315-11	CAP, DISCHARGE - BOTTOM
22	1	25316-11	CAP, DISCHARGE - TOP
23	1	25317-00	GUIDE, CHAIN - APPLICATOR
24	2	25318-00	BOLT, ADJUSTMENT - APP
25	1	25319-01	SHAFT GUARD
26	1	25321-00	GUARD, CHAIN - APPLICATOR
27	1	25328-10	DRUM COMPLETE-APPLICATOR, 3 PIECE, W/ COATED LIFT ZONE
28	1	25329-40	SUPPORT WDMT-ATOMIZER, APPLICATOR
29	1	25330-00	INLET, SEED DISTRIBUTION - APP
30	1	25331-00	ATOMIZER ASSEMBLY - APPLICATOR
31	1	25332-00	CHUTE, INLET - APPLICATOR
32	1	25333-10	BRACKET, INLET CHUTE - RH
33	1	25334-10	BRACKET, INLET CHUTE - LH
34	4	25338-11	LEG EXTENSION-APPLICATOR, 6.13"
35	2	25341-06	SEAL, DISCHARGE - LOWER
36	1	25341-07	SEAL, DISCHARGE - UPPER
37	3	25341-08	MOVER, CLEANOUT - APPLICATOR
38	1	25341-10	CONE - APPLICATOR
39	2	25341-11	SCRAPPER, CHUTE
40	2	25341-15	FLAP, DISCHARGE SIDE - APP.
41	1	25341-16	FLAP, DISCHARGE FRONT - APP.
42	2	25341-17	CAP, FORKPOCKET - APPL
43	1	25341-20	ATOMIZER

44	1	25341-21	LIQUID DISTRIBUTOR PLATE-TOP
45	1	25341-22	LIQUID DISTRIBUTOR PLATE-BOTTOM (W/ GASKET SET)
45	1	25341-14	GASKET SET ONLY
46	1	25341-24	FLAP-APPL DISCH CHUTE, STRAIGHT
47	2	25341-25	WEAR STRIP-CHAIN GUIDE, APPLICATOR DRIVE
48	2	25342-01	STOP, FRAME - APPLICATOR
49	3	25345-31	HANGER BRKT-ATOMIZER
50	4	25360-01	WHEEL-POLYURETHANE
51	2	25360-02	WHEEL, GUIDE-APPLICATOR
52	2	25361-02	HANDLE-ADJUSTABLE
53	5	25361-03	TOGGLE CLAMP-PULL ACTION, UBOLT, STEEL
54	2	25362-20	GAURD-APPLICATOR DRUM, SERIES 2
55	1	45116-16	SHAFT, 1 1/4" X 74.75" - APP.
56	1	45116-17	SHAFT, 1 1/4" X 88.75" - APP.
57	8	60209-14	COLLAR-SET, 1-1/4", 2 PIECE, BLACK OXIDE
58	2	90001-92	DISCONNECT SWITCH- NEMA 4X
59	1	95004-04	FTG PLMB-MANIF,90DEG,8PORT,FNPT,1/2"OUTX3/8"IN
60	1	95004-05	STATIC MIXER-6 ELEMENTS, 1/2"MNPT, 316SS
61	1	95025-41	MOTOR-230V/460V 3PH,3425 RPM@60HZ@6IN#,CUST SHAFT
62	2	HN1000H-C-2Z	NUT-HEX, ZINC, 1-8

9 – General Dimensions



10 – Specifications

Capacity

The nominal capacity of the Model 4808NGA Applicator is 2,000 Bu/hr. The capacity of the applicator varies under certain conditions. The following factors play a role in the performance of the applicator:

1. Speed of drum
2. Moisture content/type of commodity
3. Percentage of foreign matter
4. Tilt of drum

Drive Unit

5 HP 3 PH 230 V

Drum

4' x 8'

Speed

19.5 RPM max

11 – Bolt Torque Specifications

Proper torquing of bolts, cap screws, studs, and nuts is very important when assembling or installing any component on a machine. The chart below lists bolt torques for most popular sizes of bolts. The chart also applies to tightening studs or nuts. Refer to the chart whenever a bolt must be tightened on a machine.

Two columns of figures are shown for each type of bolt, dry and lubricated. The “dry” columns covers bolts as they come from the package, or bolts with no external lubrication applied. The second column covers bolts externally lubricated with oil, white lead, anti-seize, graphite, etc. This column should also be used to tighten bolts that are Loctite-applied.

Diameter No. Threads	Grade 8				Grade 5			
	Dry Torque		Lub. Torque		Dry Torque		Lub. Torque	
	lbf-ft	N-m	lbf-ft	N-m	lbf-ft	N-m	lbf-ft	N-m
4-40	12	1	9	1	8	0.9	6	0.6
6-32	23	2	17	1	16	1	12	1
8-32	41	4	31	3	30	3	22	2
10-24	60	6	45	5	43	4	32	3
1/4-20	144	16	108	12	96	10	75	8
	lbf-ft	N-m	lbf-ft	N-m	lbf-ft	N-m	lbf-ft	N-m
5/16-18	25	33	18	24	17	23	13	17
3/8-16	45	61	35	47	30	40	23	31
7/16-14	70	94	55	74	50	67	35	47
1/2-13	110	149	80	108	75	101	55	74
9/16-12	150	203	110	149	110	149	80	108
5/8-11	220	298	170	230	150	203	110	149
3/4-10	380	515	280	379	260	352	200	271
7/8-9	600	813	460	623	420	583	320	433
1-8	900	1,220	680	922	640	867	480	650
1 1/8-7	1,280	1,735	960	1,301	800	1,084	600	813
1 1/4-7	1,820	2,467	1,360	1,844	1,120	1,518	840	1,139
1 3/8-6	2,380	3,227	1,780	2,413	1,460	1,979	1,100	1,491
1 1/2-6	3,160	4,284	2,360	3,200	1,940	2,630	1,460	1,979

This Page Left Blank Intentionally.