

1) Setup AutoBatch Parameters

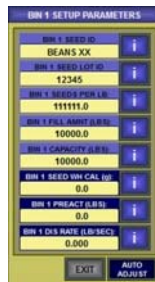
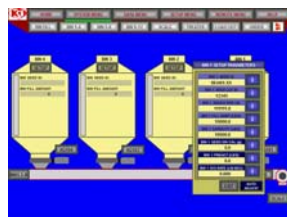


2) Setup AutoTreat Parameters



3) Seed Source Setup

- Setup bin parameters
- Enter seed wheel cal weight at this time



4) Customer Setup

- Insert customers into customer management tool
- Save changes before leaving this page



5) Recipe Setup

- Insert recipes into recipe management tool
- Save changes before leaving this page



6) Setup Seed Sources on Order Page

- Enter seed sources into quick load menu
- Allows sources to be quickly selected when setting up an order



7) Pump Setup

- Calibrate pumps
 - Calibrate for 180 seconds, at least once a day

CONVEYORS INC V3.0 Start to Finish (AT)

8) Setup Order – a) Select Customer

CONVEYORS INC V3.0 Start to Finish (AT)

8) Setup Order – b) Select Seed ID, Amount and Rate

CONVEYORS INC V3.0 Start to Finish (AT)

8) Setup Order – c) Select Recipe

| RECIPE # | RECIPE 1 | RECIPE 2 | NO TREAT | RECIPE # 3 |
|-------------|--------------|--------------|--------------|--------------|
| SEED RATE | 1800 Bushels | 2200 Bushels | 2400 Bushels | 0 Bushels |
| TREATMENT 1 | 2.100 oz/100 | 1.900 oz/100 | 0.000 oz/100 | 0.000 oz/100 |
| TREATMENT 2 | 1.800 oz/100 | 0.000 oz/100 | 0.000 oz/100 | 0.000 oz/100 |
| TREATMENT 3 | 2.500 oz/100 | 2.600 oz/100 | 0.000 oz/100 | 0.000 oz/100 |
| SEED RATE | 0.000 oz/100 | 2.700 oz/100 | 0.000 oz/100 | 0.000 oz/100 |

KSI CONVEYORS INC V3.0 Start to Finish (AT)

9) Run Job

Return to Home Screen and ensure AutoTreat is Enabled

- Push Master Start
- Enable Bin

- Scale fill conveyors will start and bin gate will open
- Scale will fill to desired weight
- Conveyors will turn off
- Treater fill conveyors will start and the scale gate will open to move seed to treater inlet hopper
- Once the seed reaches the treater inlet high level, the scale gate will close and the treater fill conveyors will turn off

KSI CONVEYORS INC V3.0 Start to Finish (AT)

9) Run Job – b) Begin Treating

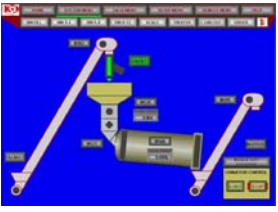
- Once treatment is ready and pump lines are primed press continue

- Discharge conveyor and treater drum will turn on
- Once drum has reached speed, the seed wheel will turn and the system will begin treating
- The treater fill conveyor will turn on and the scale gate will open to keep the treater inlet hopper full
 - It is best to set the manual scale control chute so that the scale discharge rate closely matches your treating rate to minimize conveyor cycling on and off

KSI CONVEYORS INC V3.0 Start to Finish (AT)

9) Run Job – c) Continue Treating

- Once the treater inlet low level no longer senses seed, the treater will go into cleanout mode
- When the next batch is ready to treat, the treater will start back up and continue treating

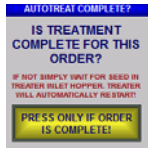


KSI CONVEYORS INC V3.0 Start to Finish (AT)

10) Run Job – d) Job Complete

- Once the last batch for the job has been treated, the treater will begin to cleanout for the final time


- Drum will shut down and then run in reverse for a preset amount of time
- The load out conveyors will run for a preset amount of time and the shut down (assuming Auto Discharge is enabled)
- A pop up box will appear asking for the operator to confirm that the treatment is complete for this order
- Press the complete button and the system will know that the job is completely finished



KSI CONVEYORS INC V3.0 Start to Finish (AT)

10) Run Job – e) Print Ticket

- From the Home Screen press Master Print



- Ticket is printed and job is logged to USB Drive
- For next order, repeat steps 9-10

KSI CONVEYORS INC V3.0 Start to Finish (AT)
